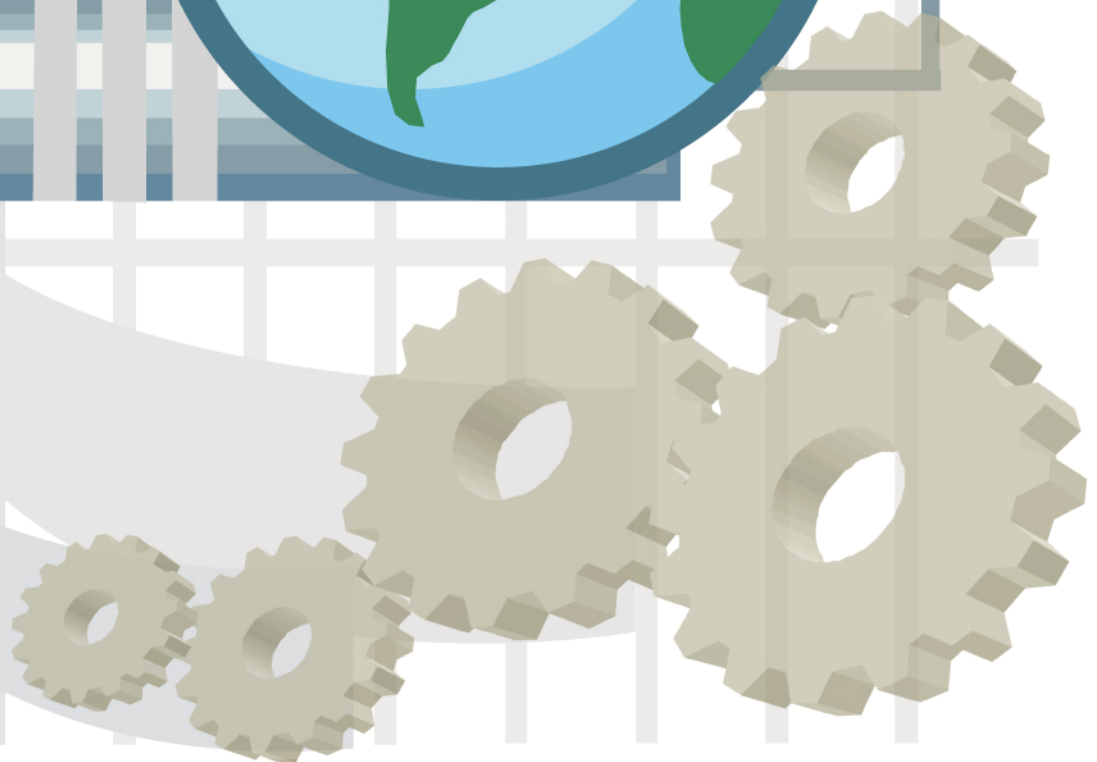




Configuration Manual For SCADA

► *LookoutDirect 4*



目錄

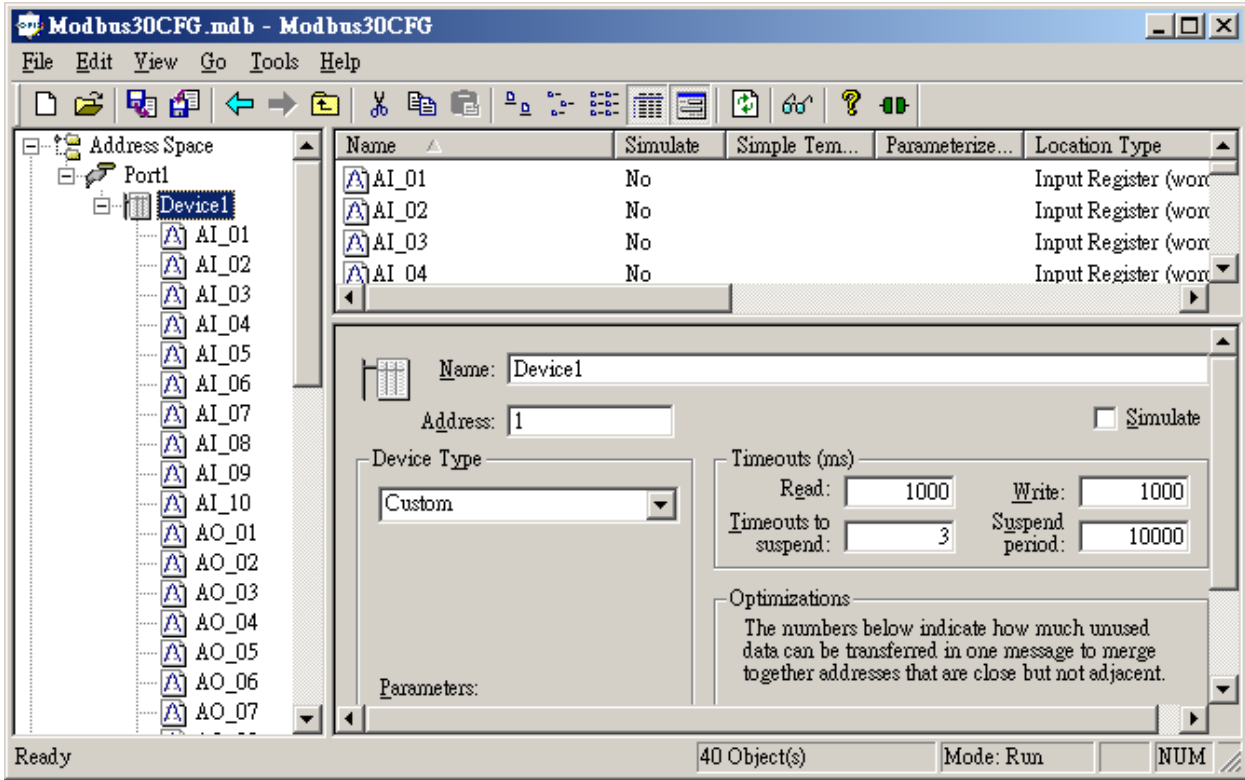
第一章 LookoutDirect 4	4
1-1 OPC Server 建立	5
1-2 LookoutDirect 4 使用 OPC Client 與 OPC Server 連線.....	6

第一章

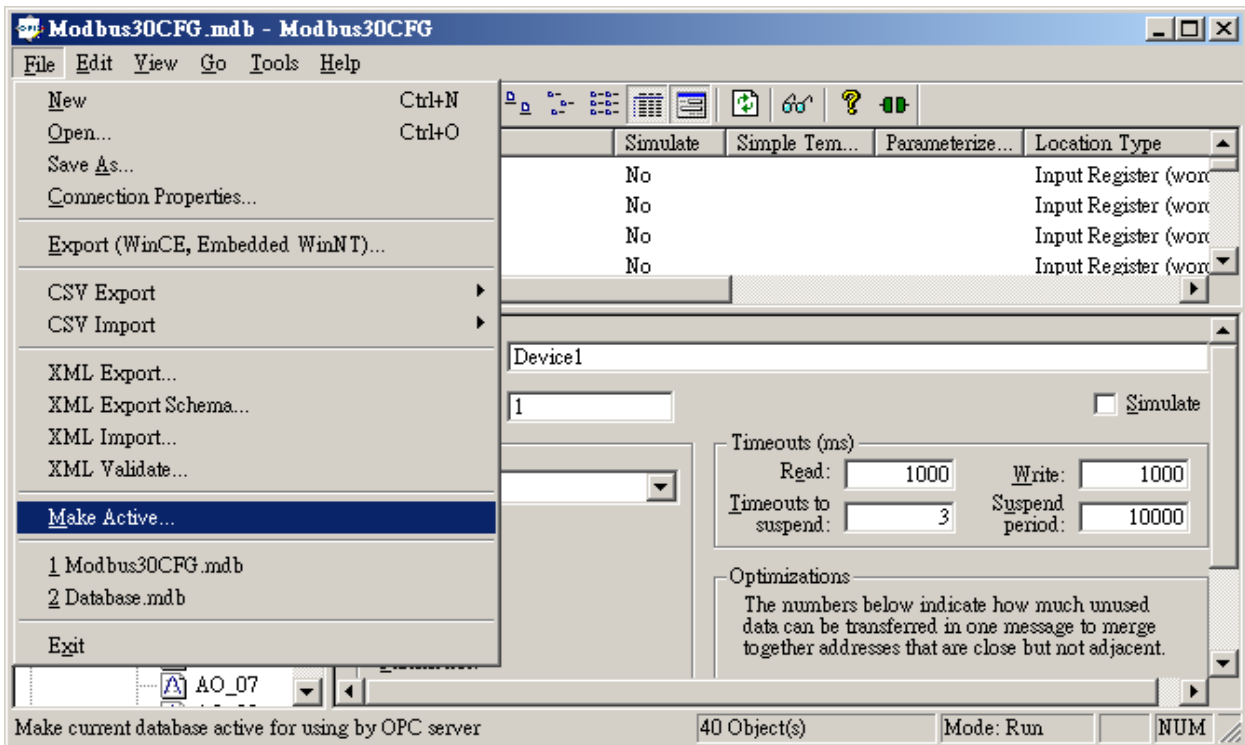
LookoutDirect 4

1-1 OPC Server 建立

請依照 OPC Server 操作手冊來設定訊號點

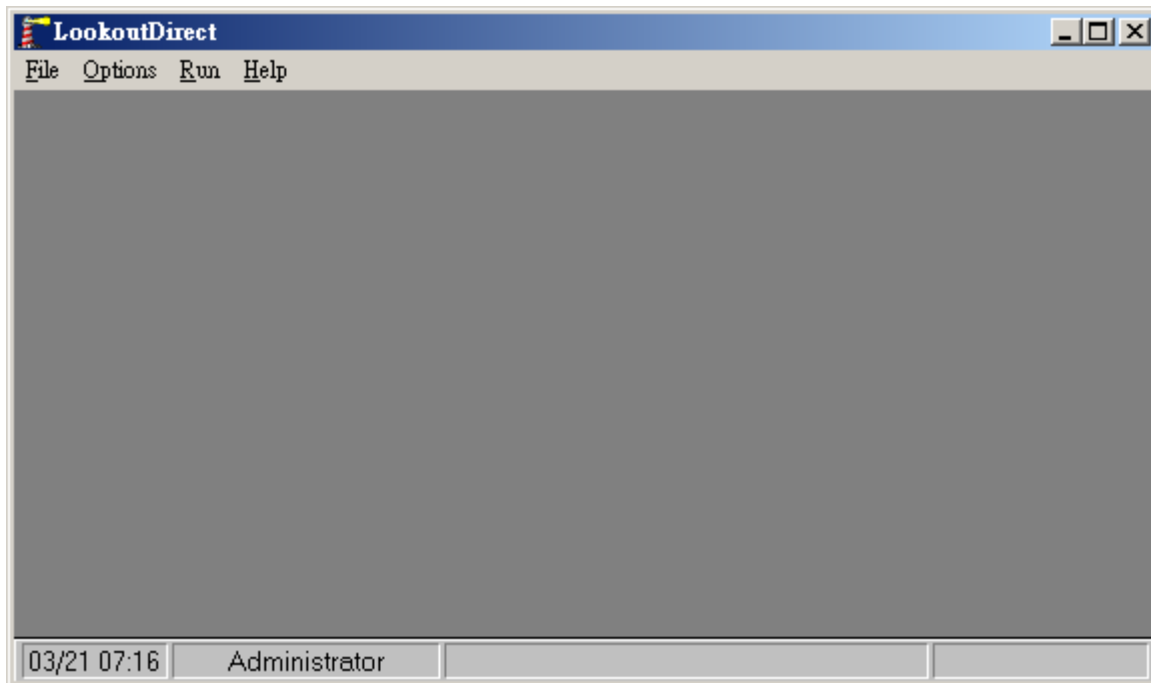


建立完成後，請點選「File」→「Make Active」儲存設定(新增的 Configuration File 才需做此設定)。

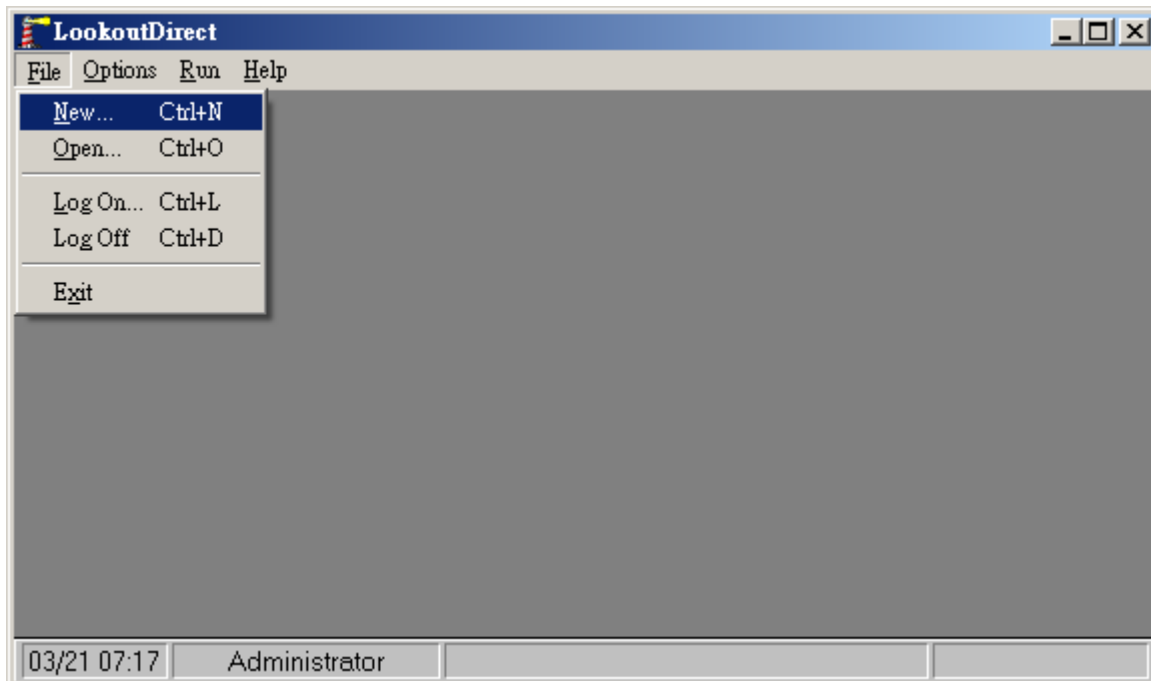


1-2 LookoutDirect 4 使用 OPC Client 與 OPC Server 連線

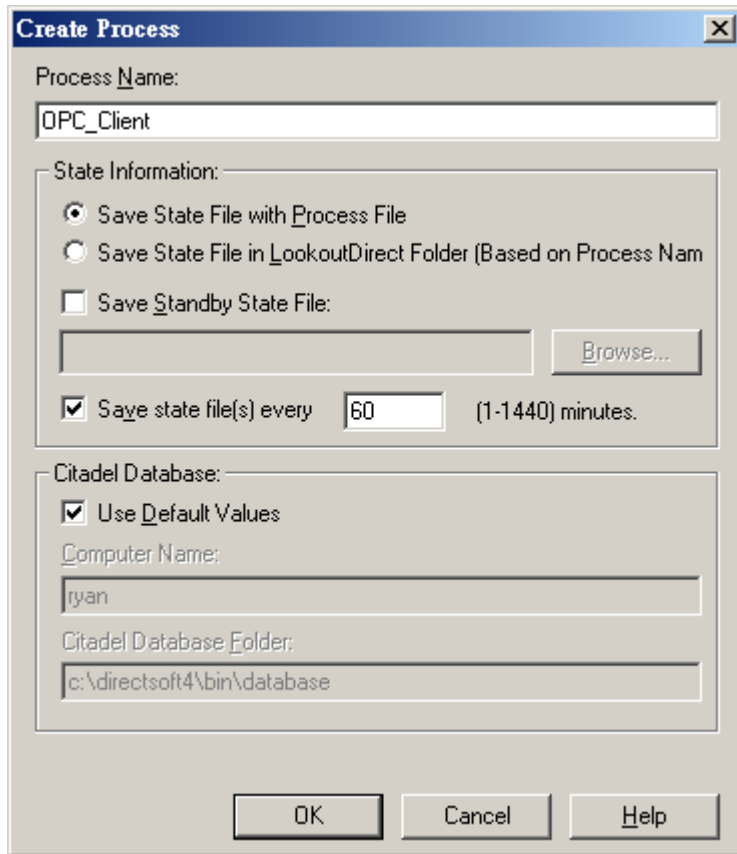
「開始」→「程式集」→「DirectSOFT 4」→「LookoutDirect Tools」→「LookoutDirect」，
開啟 LookoutDirect 4



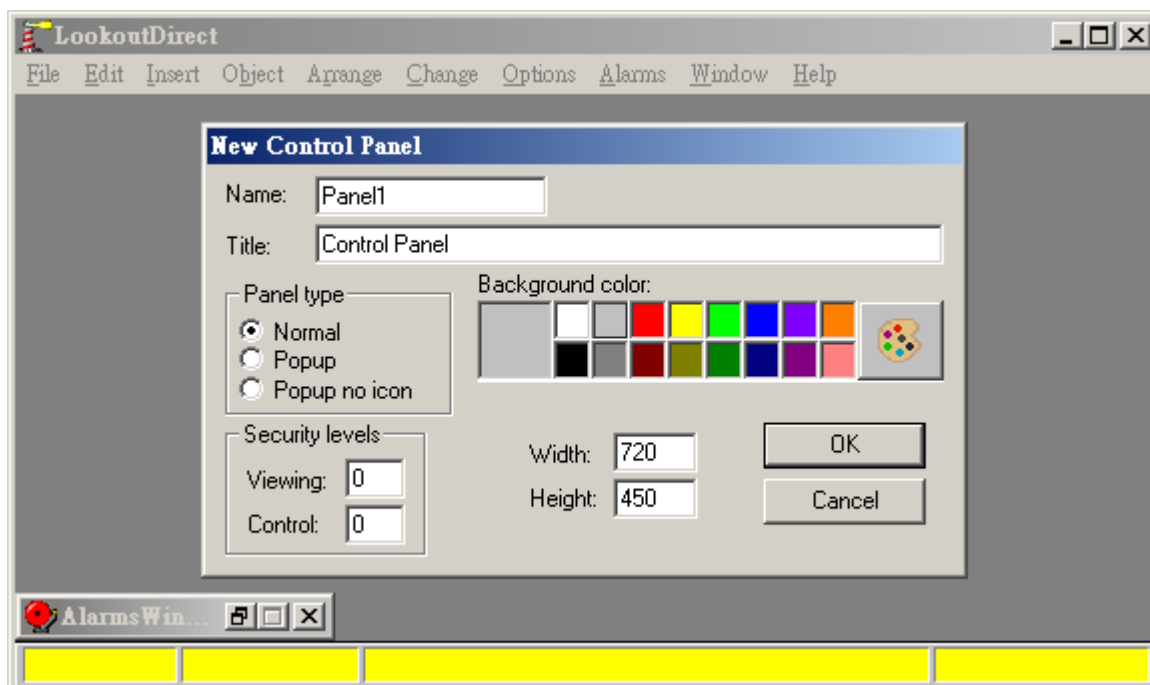
點選工具列「File」→「New」，新增 Process



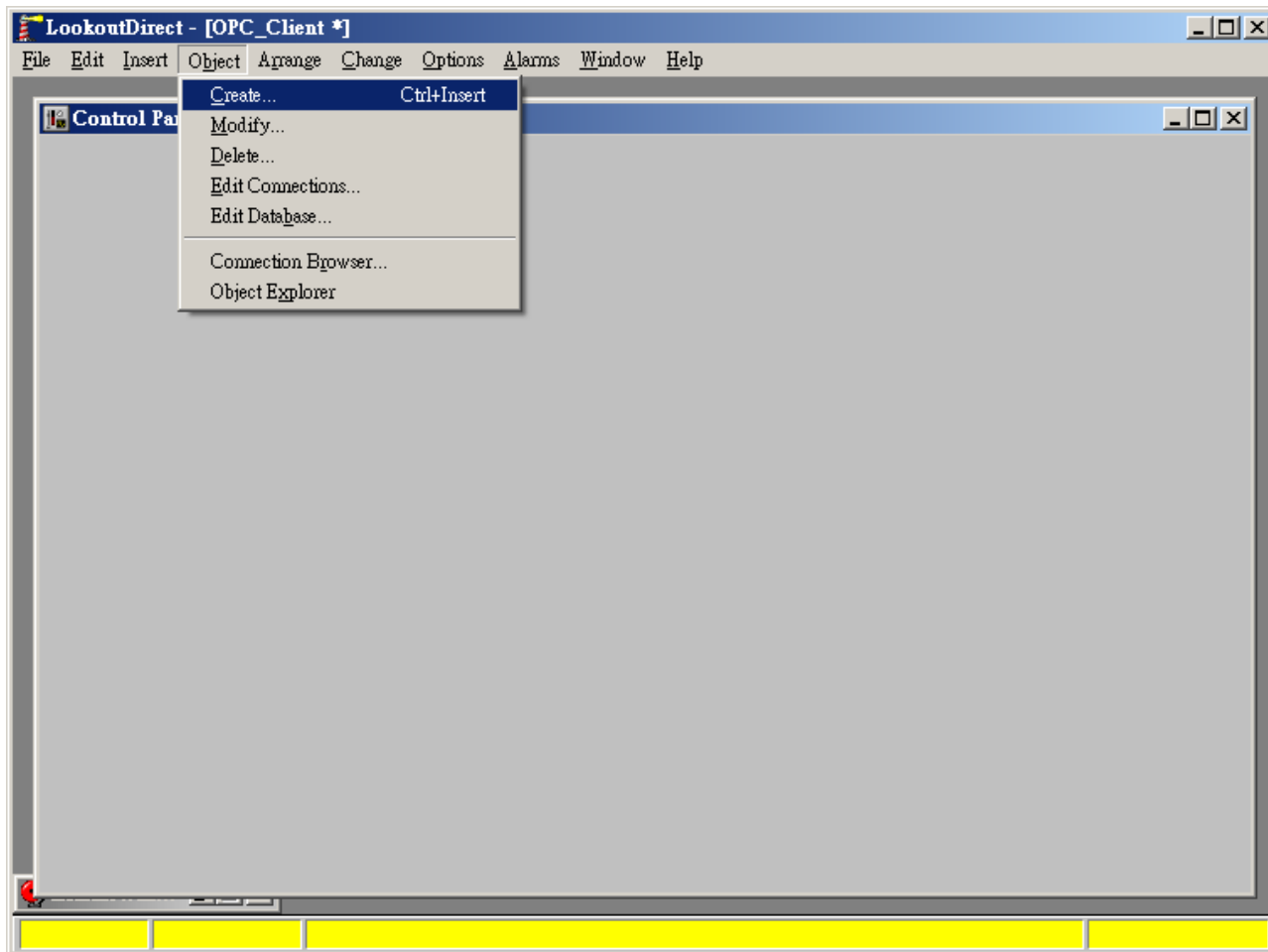
輸入 Process Name



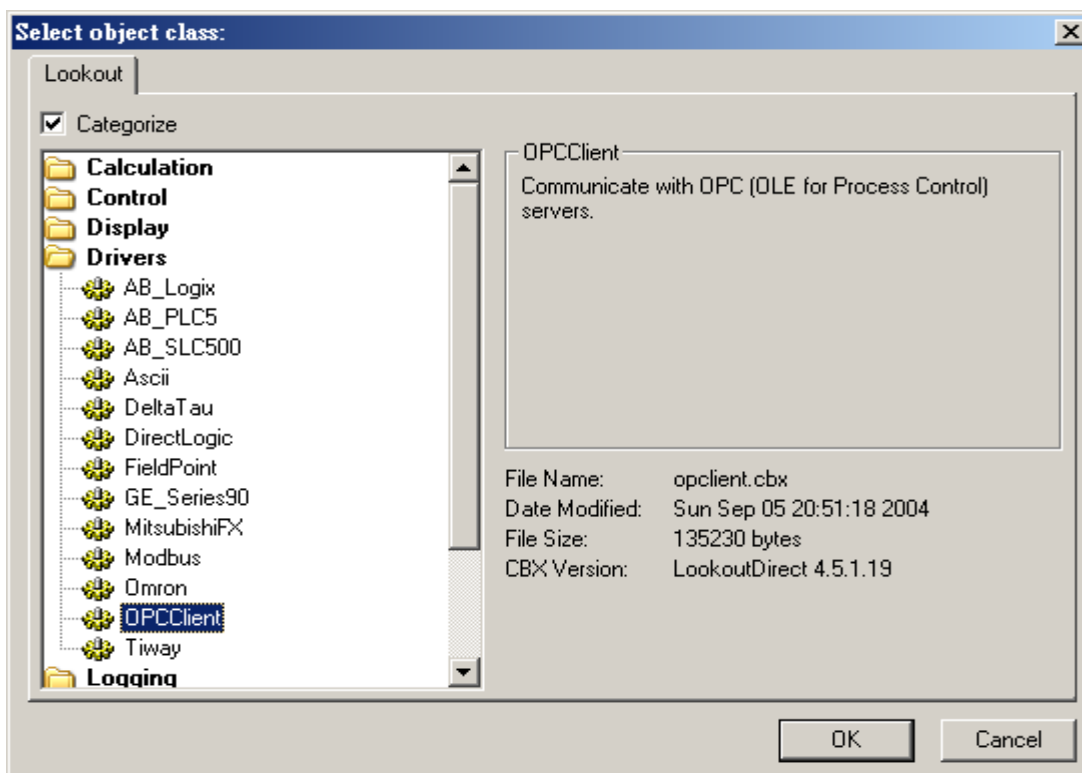
點選 OK，完成建立



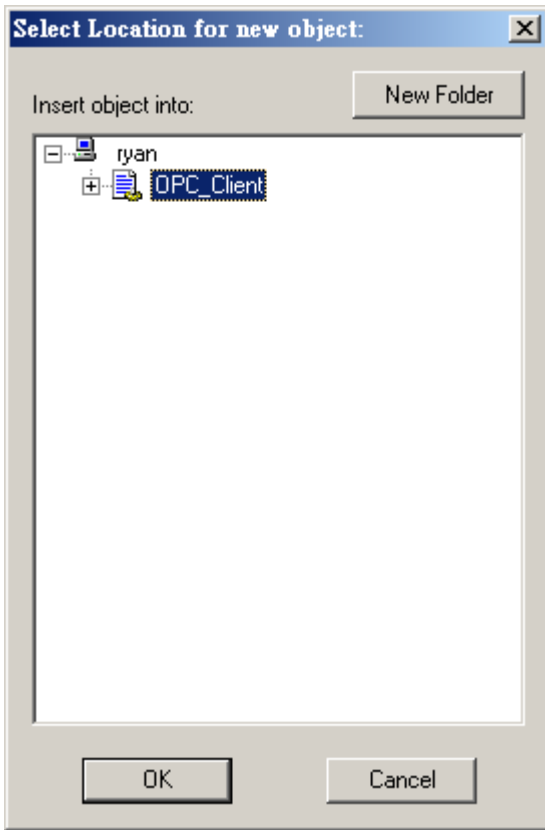
工具列「Object」→「Create」



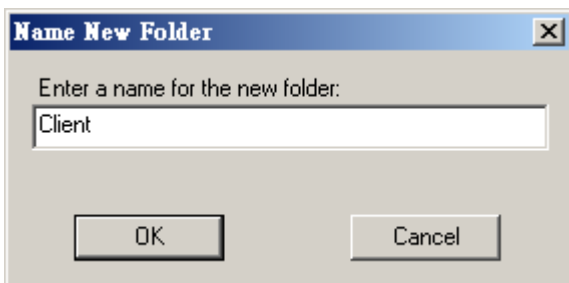
選擇「Drivers」→「OPCClient」



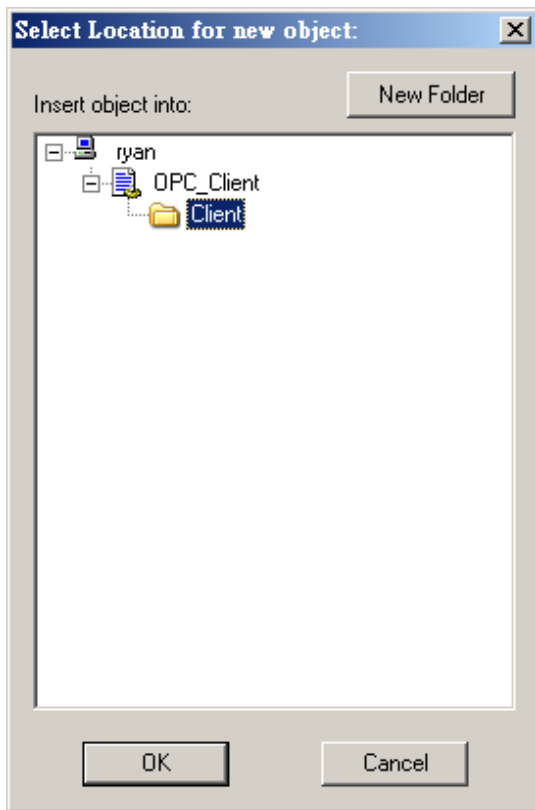
點選「New Folder」



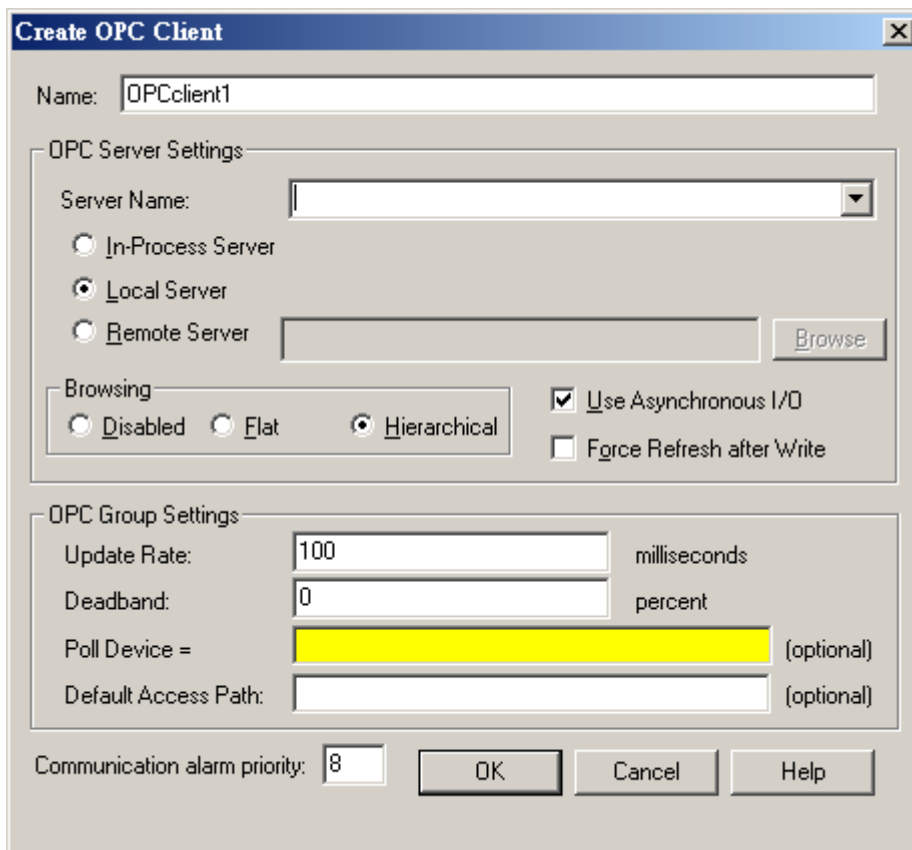
輸入 Folder 名稱

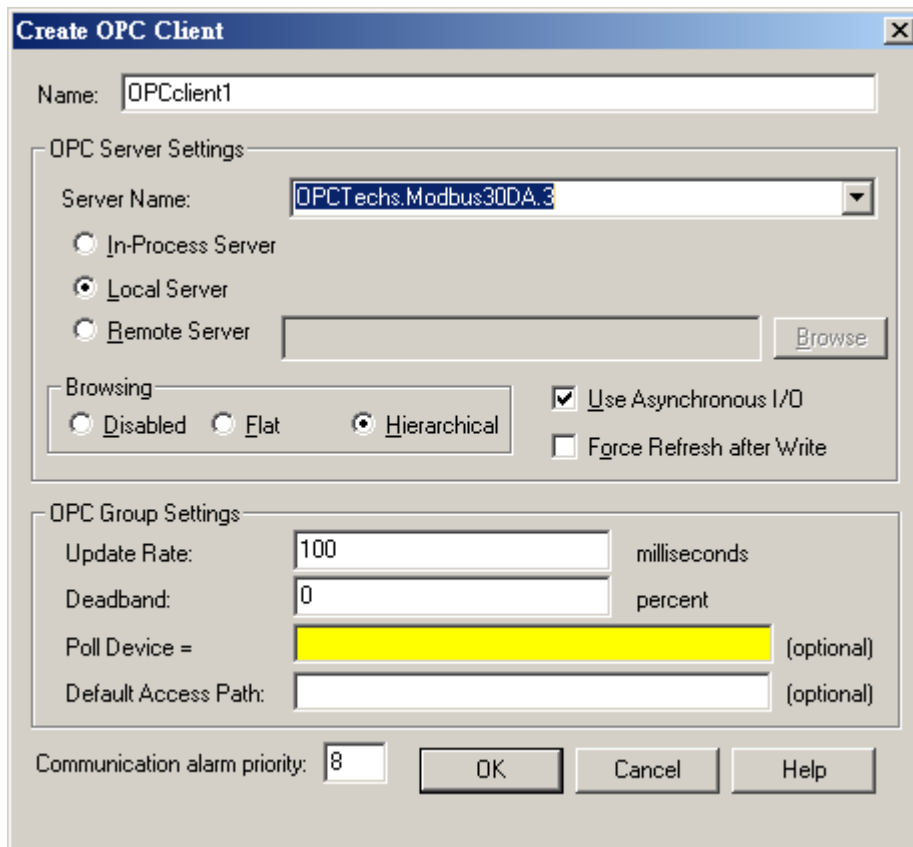


選擇 OK

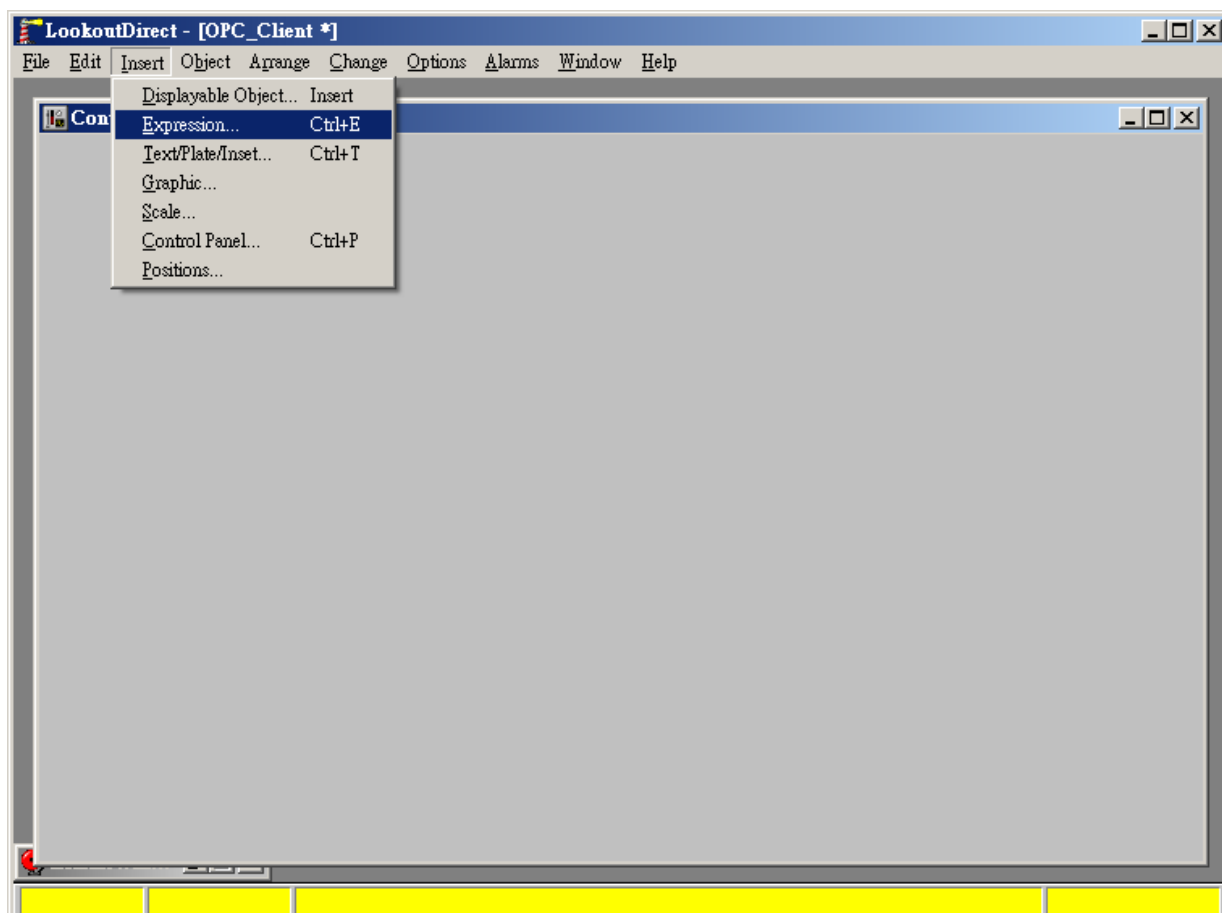


下拉式選單，選擇欲連線的 OPC Server

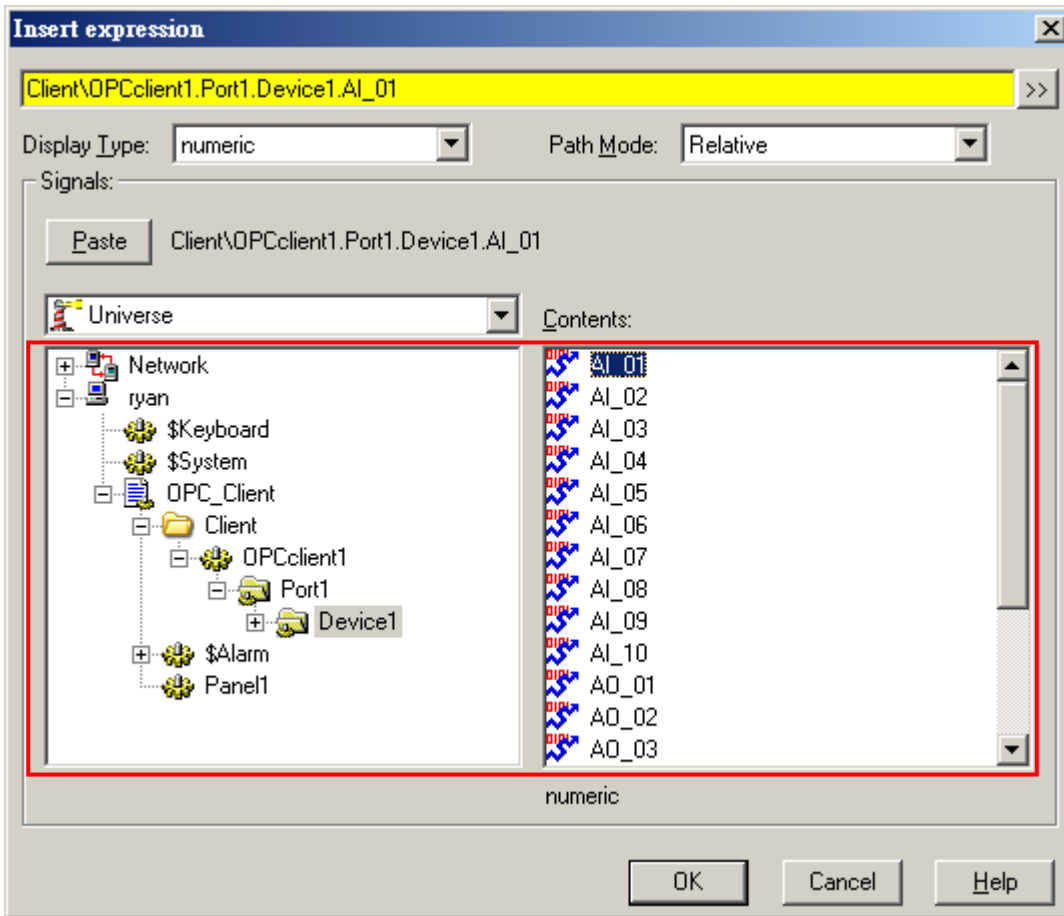




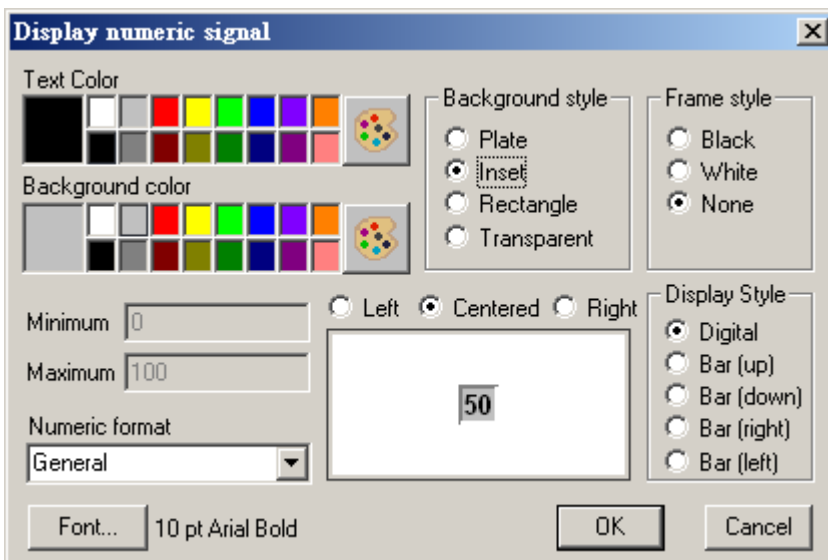
工具列「Insert」→「Expression」



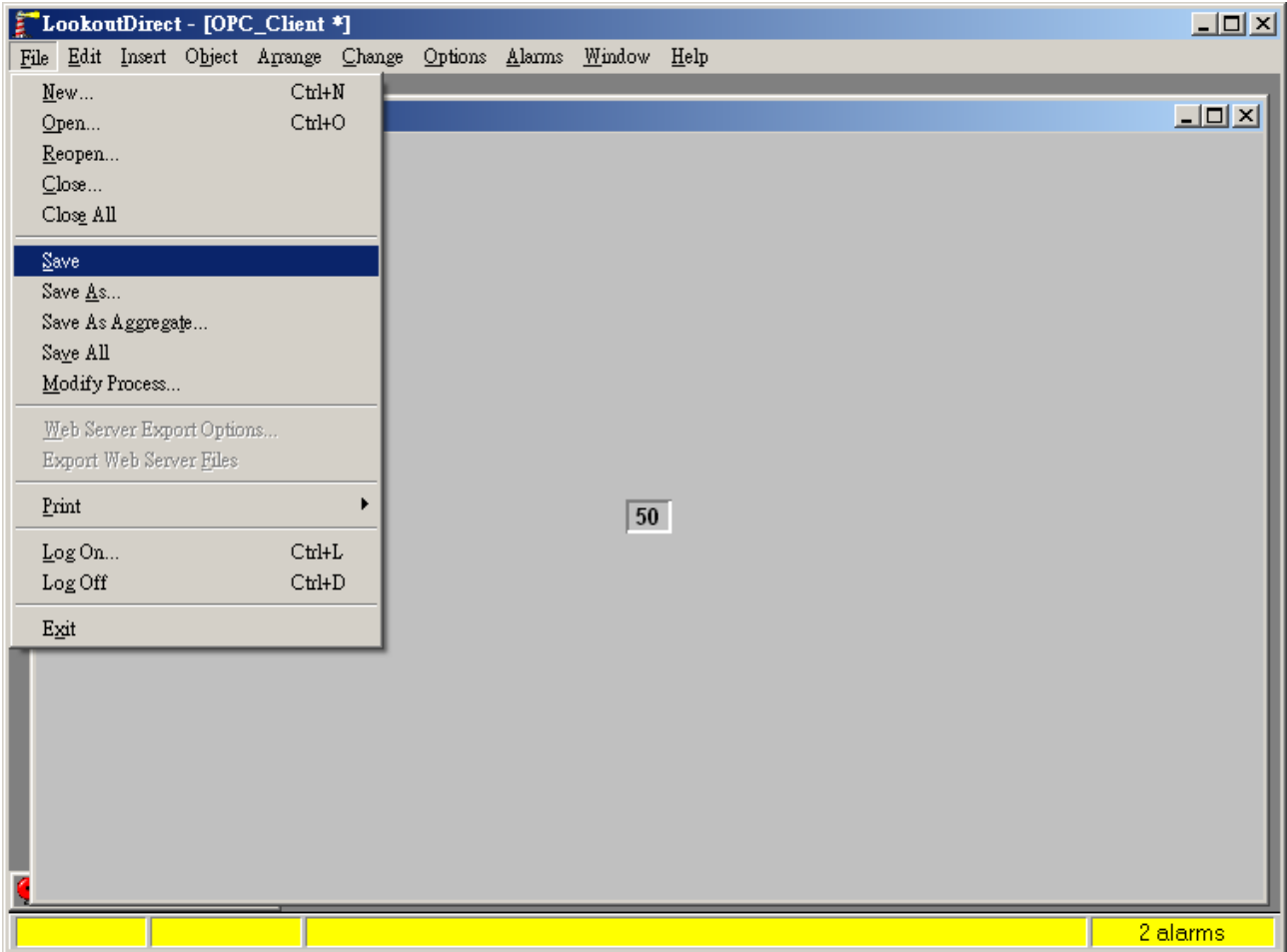
在欲連線的 Dataltem 上連點兩下



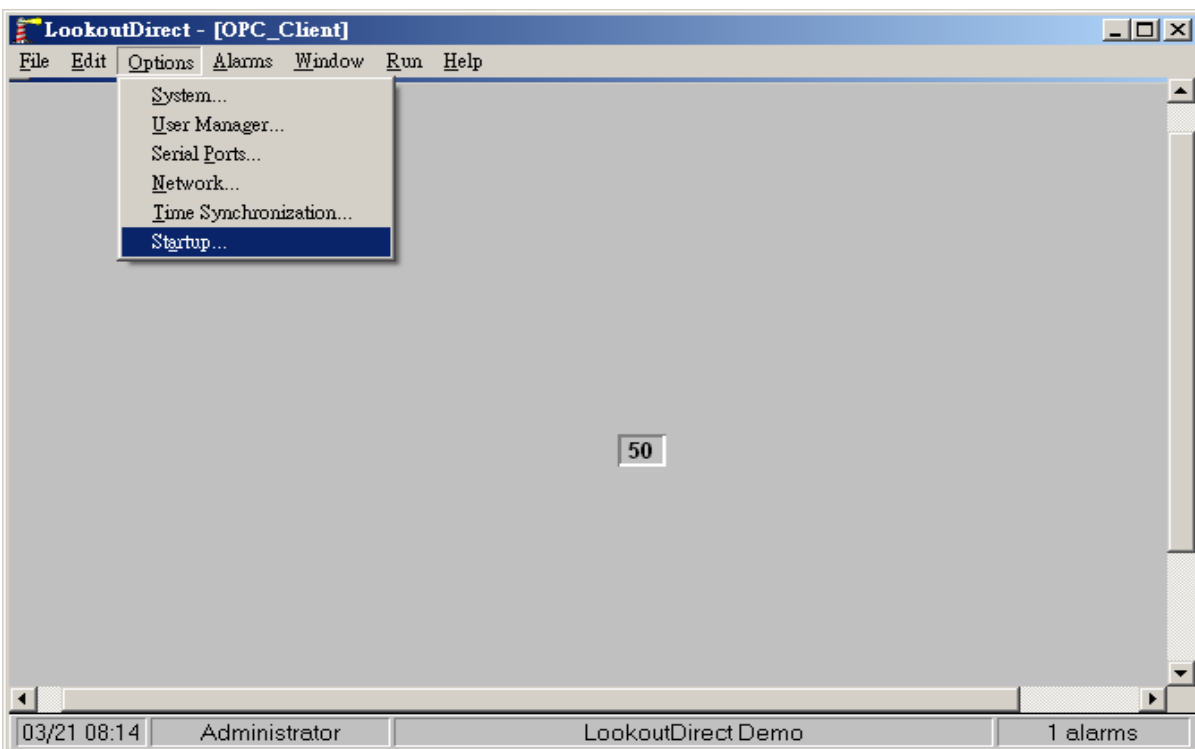
選擇 OK



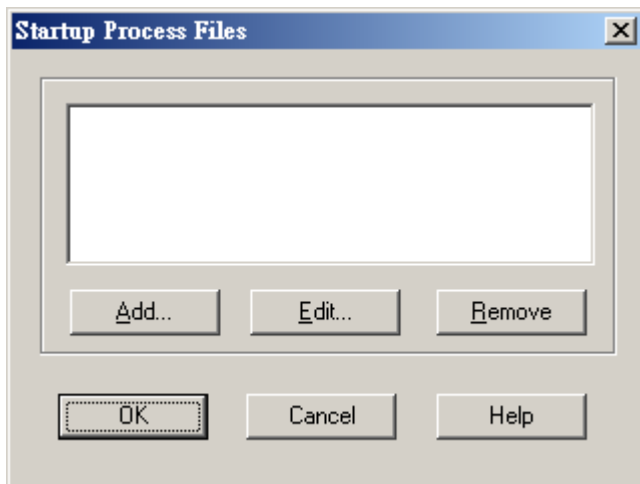
設定完後選擇工具列「File」→「Save」



選擇「Options」→「Startup」



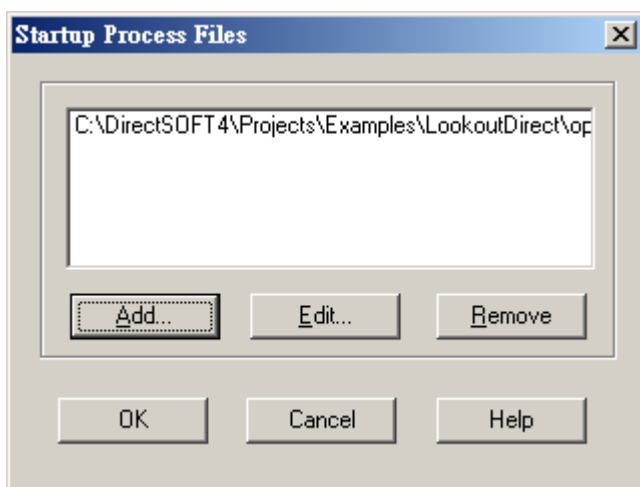
點選「Add」



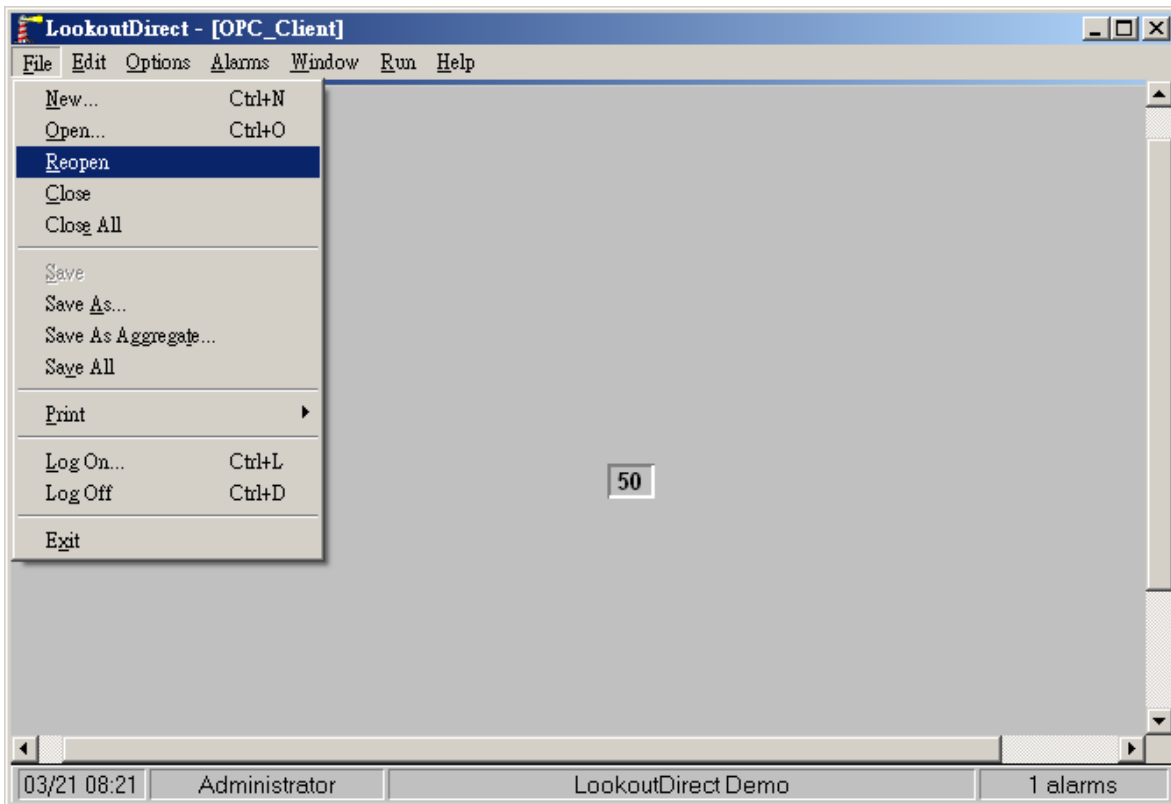
選擇剛剛所建立的 opc_client.l4p



選擇 OK 完成設定



選擇工具列「New」→「Reopen」



數值正常顯示

